

12.5-meter Truck Turntable Specification

Model: TT 12500S-30T

Turntable Details:

Diameter:	12,500mm
Height:	500 mm
Load Capability:	30,000kg
Rotation Speed:	0.1 ~ 0.5RPM
Speed Control:	Various speed control
Motor Power:	5.5 kW
Top Surface:	8 mm thick diamond tread steel plate
Installation Weight:	21,236 kg
Turntable foundation:	Concrete pit
Uniformly distributed load:	4.17 kPa

Design and Construction:

The design of turntable includes:

Structure:	Fan-shaped Structure frame combined
Center bearing, Motor drive, Support Wheels:	Fixed to the ground
Drive Method:	Weizhong Patent Pin-Gear Drive System
Surface Treatment:	Hot-dipped galvanized

Control System Information:

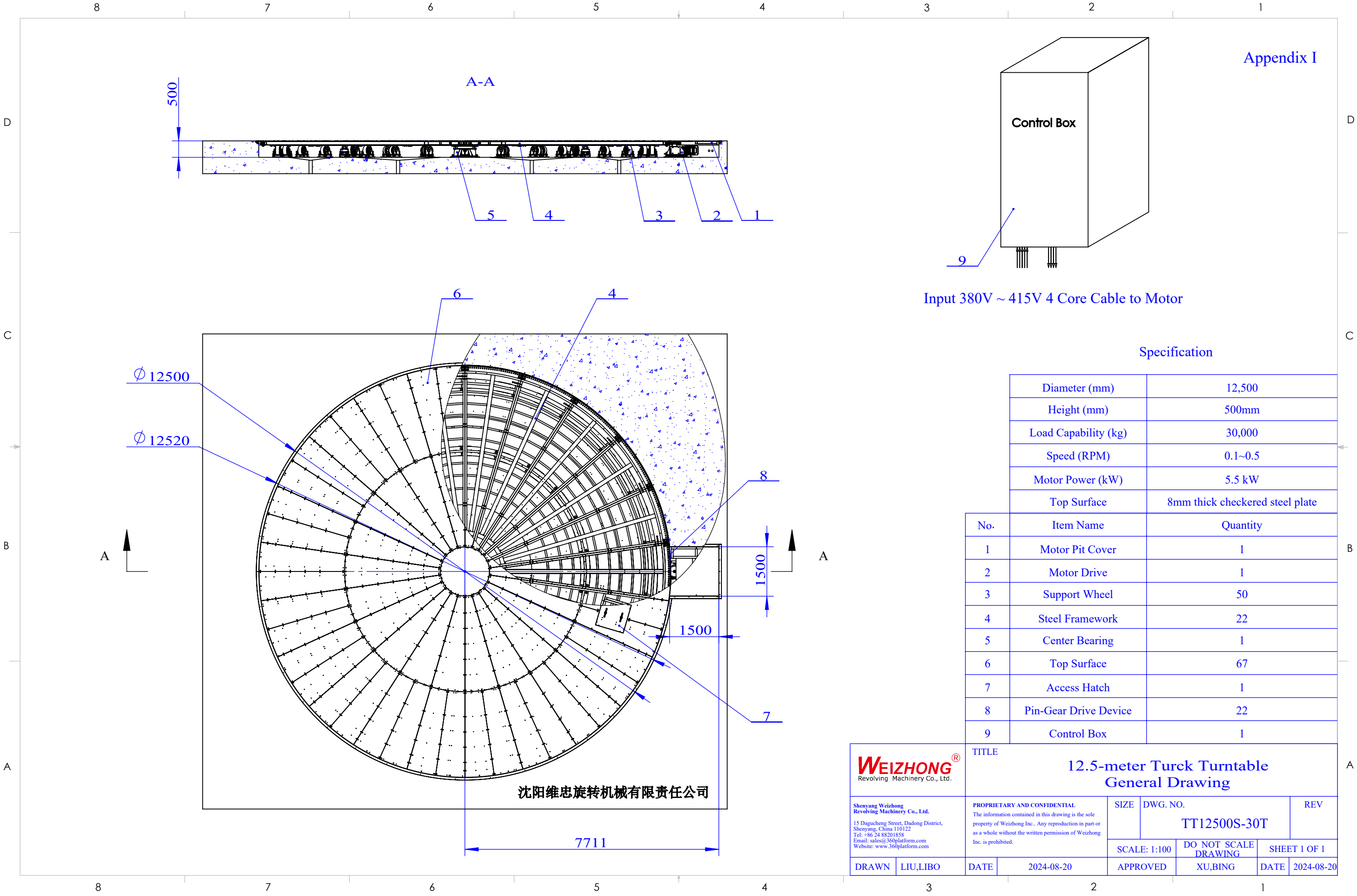
Function:	On/Off, clockwise/anti-clockwise, various speed control, emergency stop
Power Required:	3 phase 380~415V AC, 50Hz/60Hz; Max current: 30A
Control Box:	Fixed installation
Remote Control:	Optional

General Information:

General Drawing:	Appendix I
3D Sketch:	Appendix II
Pit Drawing:	Appendix III

Note:

The unit of length used in all drawings is metric millimeter



A

