

6-meter Car Turntable Specification

Model: ZX6000C-W330

Turntable Details:

Diameter:	6,000 mm
Height:	330 mm (include 75mm height angle steel on edge)
Load Capability:	9,000 kg
Rotation Speed:	0.2 ~ 1.0 RPM
Speed Control:	Various speed control
Motor Power:	1.1 kW
Top Surface:	4mm thick diamond tread steel plate+75mm height angle steel edge
Installation Weight:	2,460 kg
Turntable foundation:	Concrete pit
Uniformly distributed load:	4.06 kPa

Design and Construction:

The design of turntable includes:

Structure:	Fan-shaped Structure frame combined
Center bearing, Motor drive, Support Wheels:	Fixed to the ground
Drive Method:	Weizhong Patent Pin-Gear Drive System
Surface Treatment:	Hot-dipped galvanized

Control System Information:

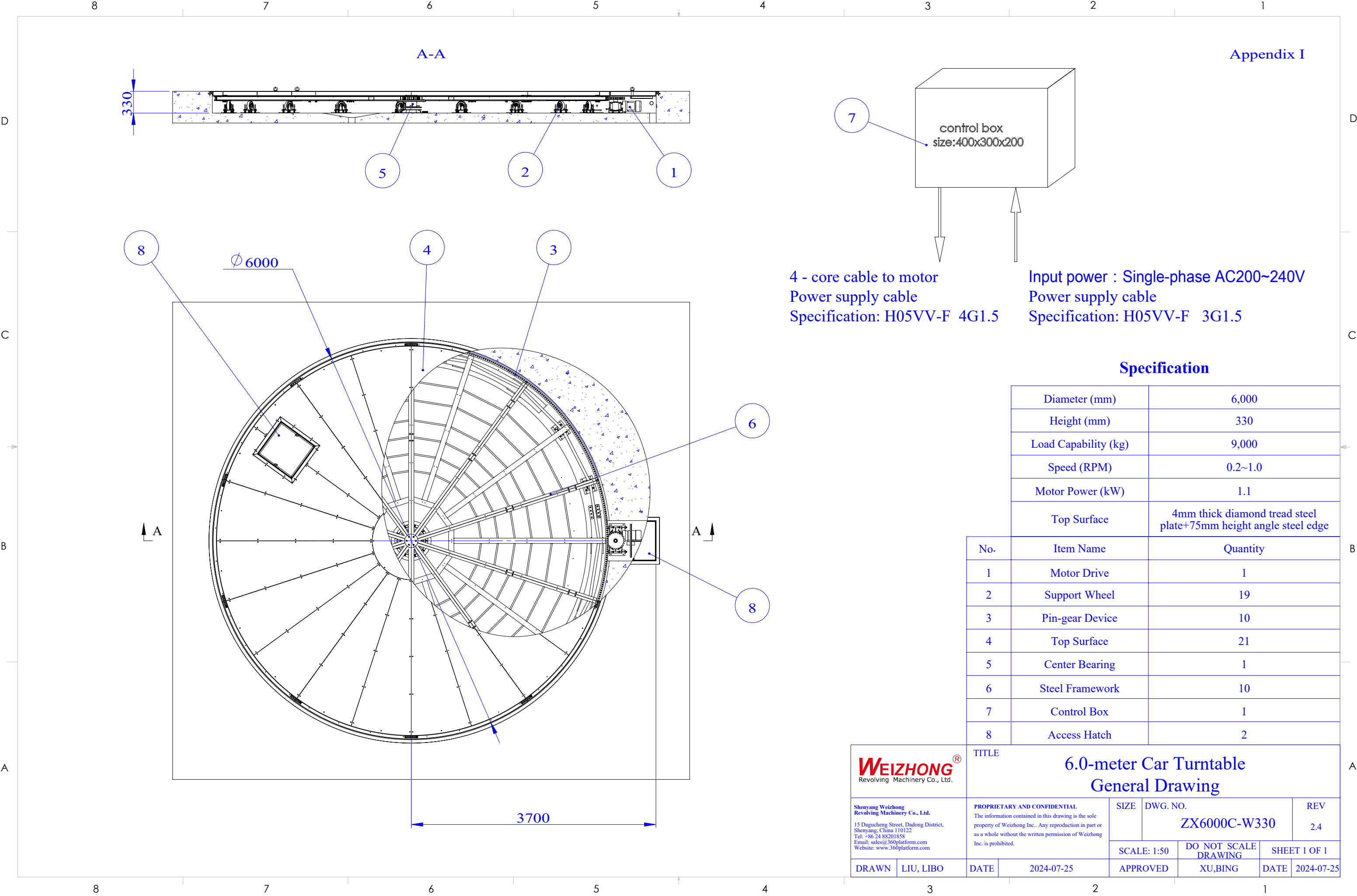
Function:	On/Off, clockwise/anti-clockwise, various speed control, emergency stop
Power Required:	Single phase 200~240V AC, 50Hz/60Hz; Max current: 10A
Control Box:	Fixed installation
Remote Control:	Optional

General Information:

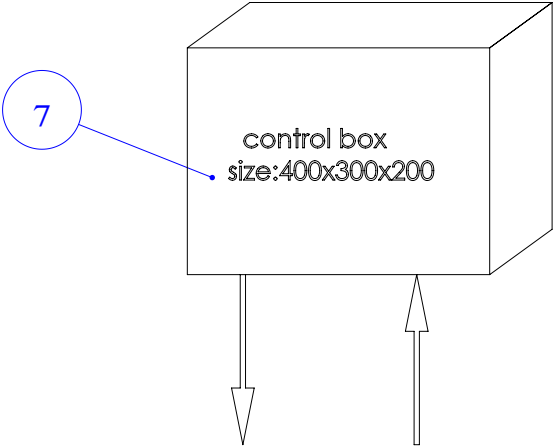
General Drawing:	Appendix I
3D Sketch:	Appendix II
Pit Drawing:	Appendix III

Note:

The unit of length used in all drawings is metric millimeter



Appendix I




4 - core cable to motor
Power supply cable
Specification: H05VV-F 4G1.5

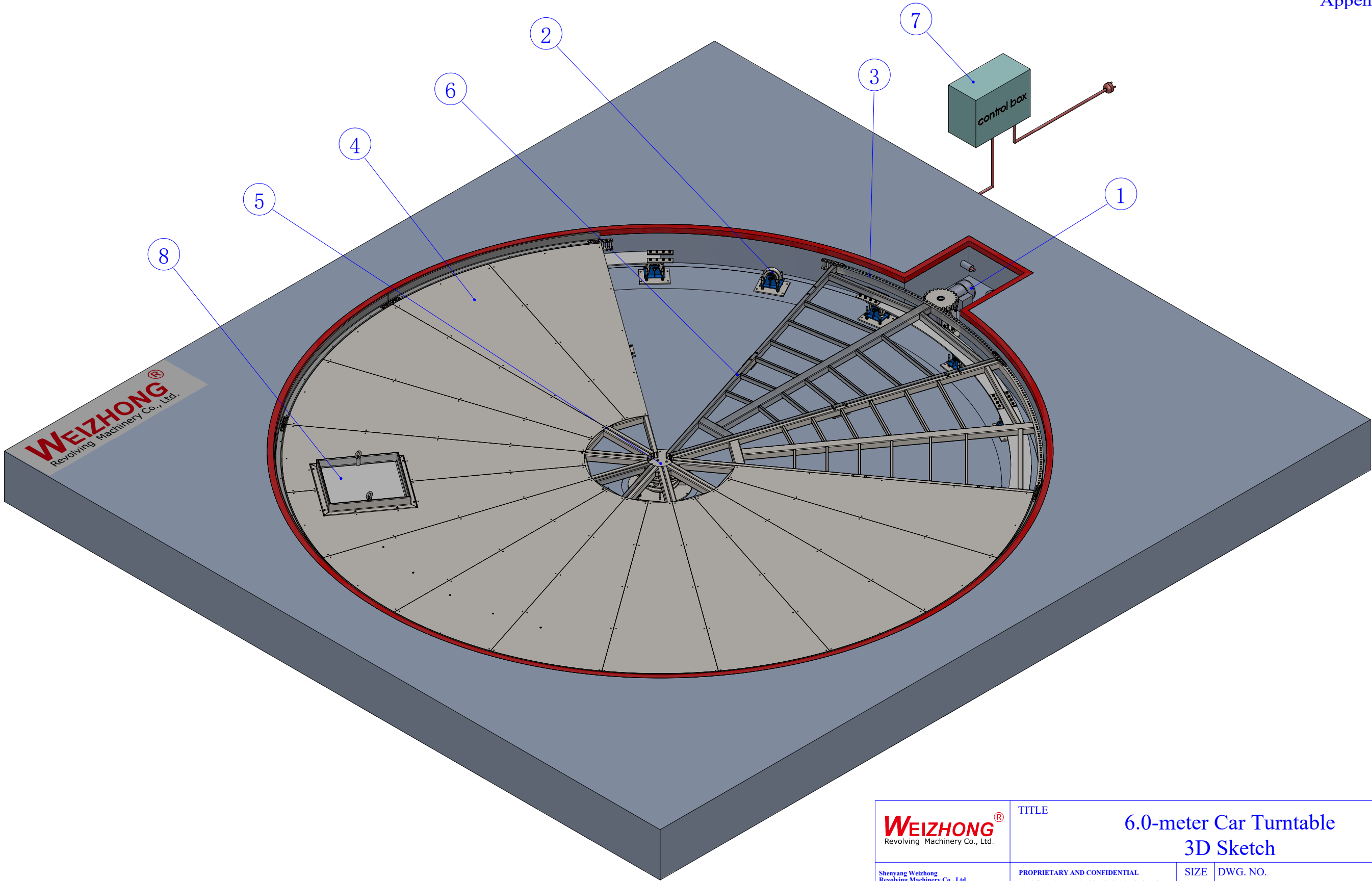
Input power : Single-phase AC200~240V
Power supply cable
Specification: H05VV-F 3G1.5

Specification

Diameter (mm)	6,000
Height (mm)	330
Load Capability (kg)	9,000
Speed (RPM)	0.2~1.0
Motor Power (kW)	1.1
Top Surface	4mm thick diamond tread steel plate+75mm height angle steel edge

No.	Item Name	Quantity
1	Motor Drive	1
2	Support Wheel	19
3	Pin-gear Device	10
4	Top Surface	21
5	Center Bearing	1
6	Steel Framework	10
7	Control Box	1
8	Access Hatch	2

 Shenyang Weizhong Revolving Machinery Co., Ltd. 15 Dagucheng Street, Dadong District, Shenyang, China 110122 Tel: +86-24 88201858 Email: sales@360platform.com Website: www.360platform.com		TITLE 6.0-meter Car Turntable General Drawing		SIZE DWG. NO. ZX6000C-W330		REV 2.4	
DRAWN	LIU, LIBO	DATE	2024-07-25	APPROVED	XU,BING	DATE	2024-07-25



<div><div>WEIZHONG®</div><div>Revolving Machinery Co., Ltd.</div></div>		TITLE <div>6.0-meter Car Turntable</div> <div>3D Sketch</div>					
<div>Shenyang Weizhong Revolving Machinery Co., Ltd.</div> <div>15 Dagucheng Street, Dadong District, Shenyang, China 110122 Tel: +86 24 88201858 Email: sales@360platform.com Website: www.360platform.com</div>		PROPRIETARY AND CONFIDENTIAL The information contained in this drawing is the sole property of Weizhong Inc.. Any reproduction in part or as a whole without the written permission of Weizhong Inc. is prohibited.		SIZE	DWG. NO. ZX6000C-W330	REV	
				SCALE: 1:30		DO NOT SCALE DRAWING	SHEET 1 OF 1
DRAWN	LIU, LIBO	DATE	2024-07-26	APPROVED	XU,BING	DATE	2024-07-26

